



UHD WROV SYSTEM



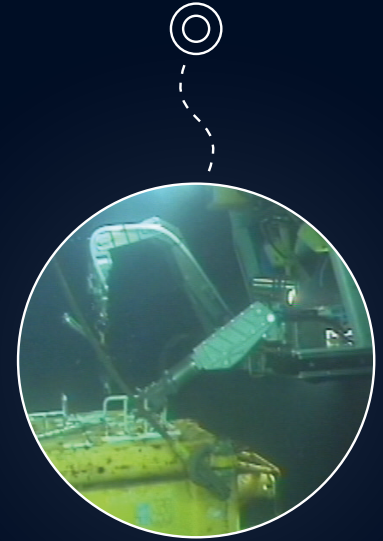
Class III Remotely Operated Vehicle

Ultra heavy-duty work-class capabilities combine remote systems engine technology with up to 200 HP of hydraulic power.

UHD WROV SYSTEM

200HP OF HYDRAULIC POWER

- Separate hydraulic circuits: main for propulsion and manipulators, auxiliary for tooling
- Automatic heading, depth, altitude, attitude, auto-tuning, and StationKeep
- AutoTrack utility to control vehicle through survey coordinates
- Digital Telemetry System: serial, video, Ethernet through Gigabit backbone
- Optional HDTV video capability



GENERAL SPECIFICATIONS

Depth rating (msw)*:	3300 or 4000
Dimensions (L x W x H - m):	3.0 x 1.9 x 2.0
Weight in air (Ton):	5.0
Through-frame lift (Ton):	3.5

*Actual depth rating may vary depending on ROV unit

PERFORMANCE

Power (hp):	200
Thrusters (horizontal/vertical):	4 x SA420 / 3x SA420
Forward, Aft bollard (Kgf):	1100
Lateral, vertical bollard (Kgf):	1000
Forward, aft speed (knots):	3.0
Lateral, vertical speed (knots):	2.0

AUTO FUNCTION CONTROL

Auto heading (deg):	± 2
Auto depth (cm):	± 15
Auto altitude (cm):	± 15
Station keep (m):	± 0.3
Displacement (m):	± 0.1

SENSORS

Fibre optic gyro heading sensor:	Crossbow VG700+ 0.75 deg accuracy 2.0 deg RMS pitch / roll
Depth Sensor:	Digiquartz 8000 1 x 10-8 resolution
DVL:	1200KHz Workhorse ±0.2% bottom velocity
Sonar:	Tritech Super Seaking

CAMERAS AND LIGHTS

First Pan & Tilt unit:	1 x electric FMC Schilling
Second Pan & Tilt unit:	Optional
Low light B/W:	1
Color CCD zoom camera:	1
Color CCD fixed focus camera:	1
Monochrome fixed focus camera:	1
Titan 4 wrist camera:	Optional
Incandescent lights:	8
HID lights:	2

TELEMETRY SYSTEM

Standard channel types*:	10 / 100 Ethernet, RS232, PAL video, 110VAC, 48VDC, 24VDC
Subsea power outputs:	Optional
1080p HD-video:	Optional
Gigabit multiplexer:	Optional

*Setup and quantity may be reconfigured

MANIPULATORS

7 functions:	FMC Schilling Titan 4
5 functions grabber:	FMC Schilling Rig-Master

TELEMETRY SYSTEM

Standard channel types*:	10 / 100 Ethernet, RS232, PAL video, 1080p HD-video 110VAC, 48VDC, 24VDC Optional
Subsea power outputs:	
Gigabit multiplexer:	

*Setup and quantity may be reconfigured

TOP HAT TETHER MANAGEMENT SYSTEM

Dimensions (Ø x H - m)*:	1.9 x 2.2 / 2.3 x 2.2
Weight in air (Ton):	3.0 / 3.1
Tether length max capacity (m)*:	425 / 850
Pan & Tilt:	1 x electric Schilling
Depth Sensor:	Digiquartz 8000
Color CCD Zoom Camera:	2
HID lights:	2

*Actual specifications may vary depending on ROV unit

CONTROL VAN, WORKSHOP AND STORAGE

2 x ISO 20' containers + 1 x 10' container

TELESCOPIC LAUNCH & RECOVERY SYSTEM

Telescoping A-Frame (L x W x H - m):	8.3 x 2.5 x 3.1
A-frame maximum height (m):	9.6
A-Frame weight (Ton):	22
Winch (L x W x H - m):	3.8 x 2.2 x 3.0
Winch weight (Ton):	22
Levelwind (L x W x H - m):	3.8 x 2.2 x 2.0
Levelwind weight (Ton):	7
Levelwind + winch (L x W x H - m):	3.8 x 2.2 x 5.0*
Levelwind + winch weight (Ton):	29*
Winch max umbilical capacity (m):	3300
HPU (L x W x H - m):	1.4 x 2.4 x 2.4
HPU weight (Ton):	4.2

*Not meant to be lifted as a single piece. Figures to be used for deck layout only.

STANDARD OPERATIONAL LIMITS

Beaufort:	6
-----------	---

ELECTRICAL REQUIREMENTS

ROV, control van:	380 / 480 VAC, 50 / 60Hz, 3PH, 630A
LARS:	440 VAC ±10%, 60Hz, 3PH, 400A

ROAD TRANSPORTATION

Number of trucks:	5 (approximately)
-------------------	-------------------